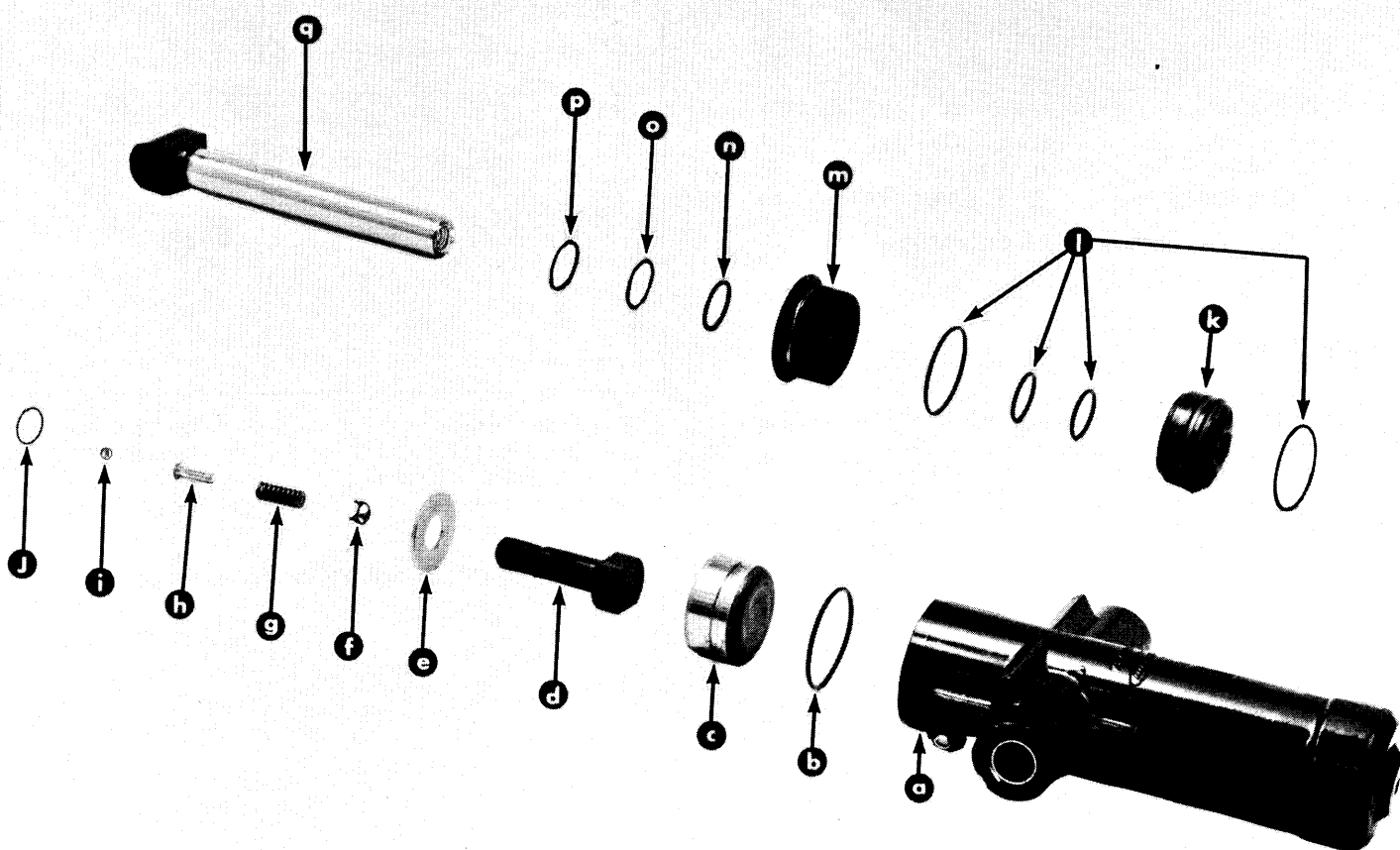


V-6 POWER TRIM CYLINDER REPAIR KIT (A-79879A1)

CAUTION: Work in a clean, lint-free area. Contamination of hydraulic system components may cause system to malfunction.

1. Disconnect hydraulic hoses from power trim cylinder and remove trim cylinder as described in appropriate service manual.
2. With trim cylinder removed, direct the up and down ports into a suitable container and drain oil from cylinder by pushing cylinder trim rod in and pulling it out several times.
3. Using a spanner wrench, unscrew rod guide and pull trim rod assembly from cylinder. (Figure 1)

4. Remove floating piston (Figure 1) from cylinder. (It may be necessary to tap open end of trim cylinder on a block of wood) Remove and discard "O" ring from piston. (Figure 1)
5. Unscrew bolt from end of trim rod and remove large washer and shock piston assembly.
6. Remove 2 "O" rings, compression springs, spring guides, spring seats and check balls from shock piston. (Figure 1) Discard "O" rings.
7. Remove rod guide from trim rod; then remove and discard retaining ring, plain washer, scraper and 3 "O" rings from rod guide. (Figure 2)
8. Clean all parts in a non-toxic solvent. After cleaning, be sure that all parts are dry (using compressed air) before reassembly.



14537

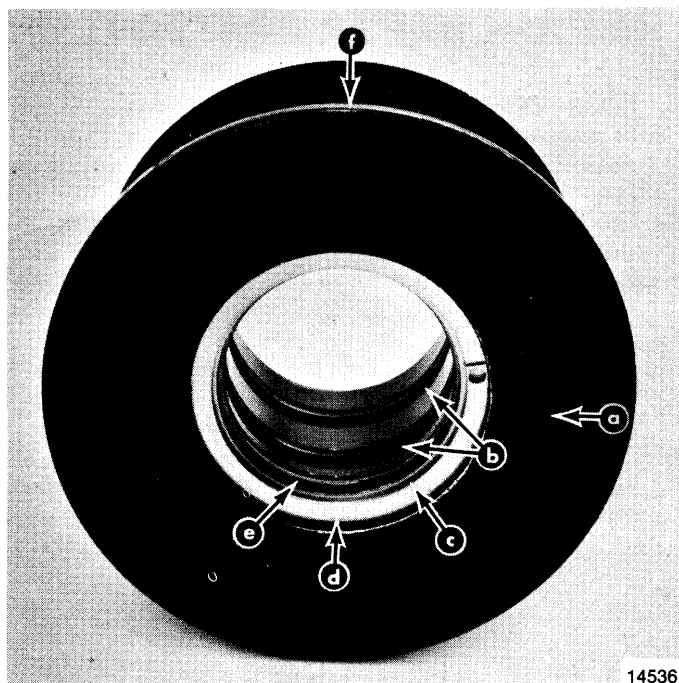
a - Trim Cylinder
b - "O" Ring
c - Floating Piston
d - Bolt
e - Large Washer

f - Spring Guide (7)
g - Compression Spring (7)
h - Spring Seat (7)
i - Check Ball (7)

j - "O" Ring
k - Shock Piston
l - "O" Rings
m - Rod Guide

n - Scraper
o - Plain Washer
p - Retaining Ring
q - Trim Rod

Figure 1. V-6 Power Trim Cylinder - Exploded Parts View



- | | |
|------------------|-----------------------|
| a - Rod Guide | d - Retaining Ring |
| b - "O" Rings | e - Scraper |
| c - Plain Washer | f - "O" Ring (Hidden) |

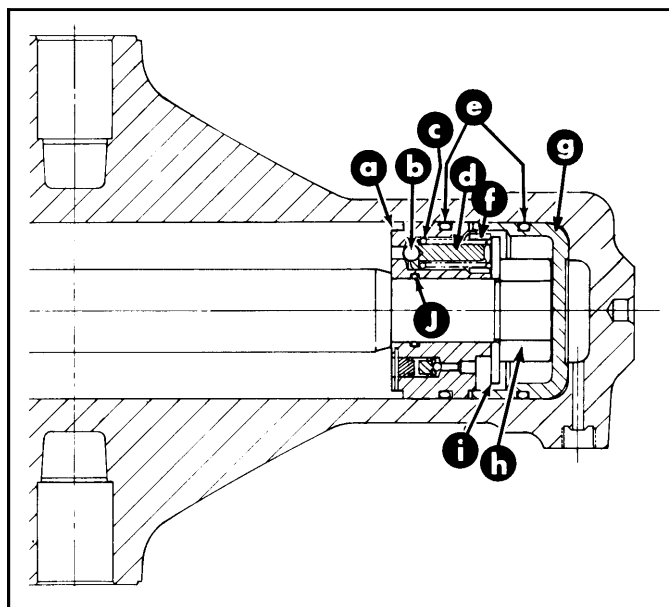
Figure 2. Rod Guide Components

REASSEMBLY

NOTE: Before reassembly, lubricate all internal parts with SAE 10W-30 or 10W-40 motor oil.

1. Install 3 "O" rings (supplied in kit) on rod guide; then install new scraper, plain washer and retaining ring in rod guide. (Figure 2) Slide rod guide over end of trim rod.

2. Install check balls, spring seats, compression springs and spring guides into shock piston as shown in Figure 3. Install 2 "O" rings (from kit) on shock piston.
3. Place shock piston and large washer on end of trim rod.
4. Apply Loctite "271" to threads of piston rod bolt, screw bolt into piston rod and torque bolt to 58-72 ft. lbs. (8.02-9.95mkg).
5. Install new "O" ring (from kit) on floating piston and insert piston into cylinder (blunt end first). (Figure 1)
6. Install trim rod assembly into trim cylinder. Thread on rod guide and tighten securely.



- | | |
|----------------------------|---------------------|
| a - Shock Piston | f - Spring Guide |
| b - Check Ball (7) | g - Floating Piston |
| c - Compression Spring (7) | h - Bolt |
| d - Spring Seat (7) | i - Large Washer |
| e - "O" Rings | j - "O" Ring |

Figure 3. Shock Piston Components