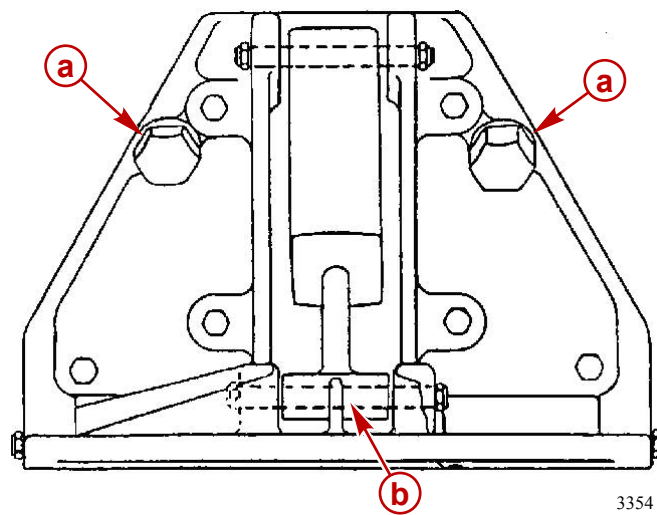

845532A1, 845532A02, 845630A1, and 845630A02 ACTUATOR KITS

Installation

Preparation (All Models)

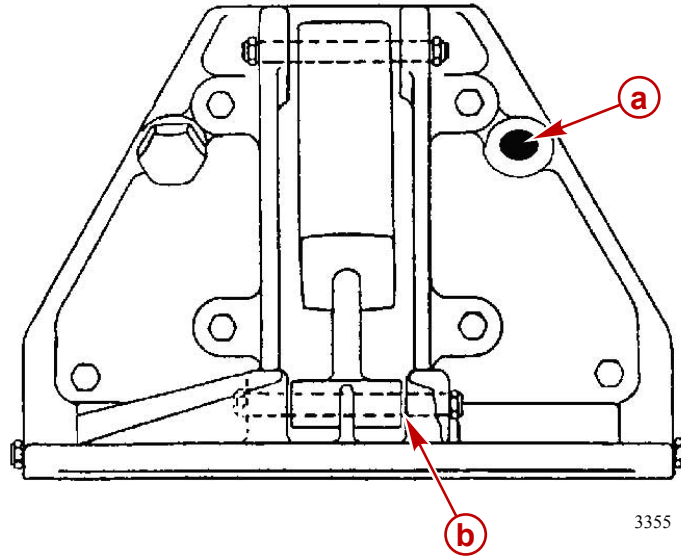
NOTE: Examples in these instructions depict installation on the starboard side of the plate.

1. Determine which side of the upper mounting plate to attach the cable.
2. Remove the plug from the plate.



- a** - Plug
- b** - Lower cylinder mounting pin

- Drill a 13 mm (1/2 in.) diameter hole through the transom in line with the center of the pipe plug hole.

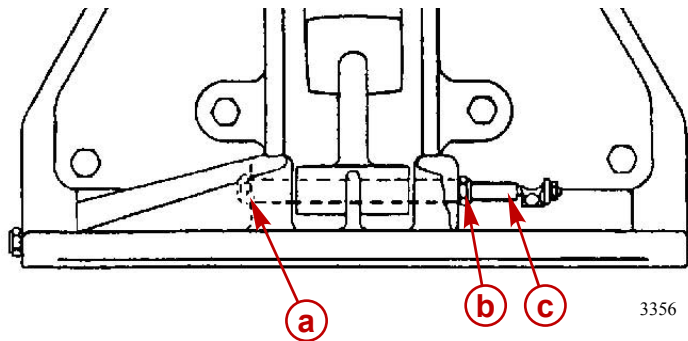


- a** - 13 mm (1/2 in.) diameter hole
- b** - Cylinder mounting pin

- Remove the lower cylinder mounting pin and replace with the actuating pin.
- Tighten the inner locknut to the shoulder of the actuating pin.

Actuating Pin Installation (845532A1 and 845630A1 Kits Only)

Install the outer locknut on the actuating pin and torque to the specified value.

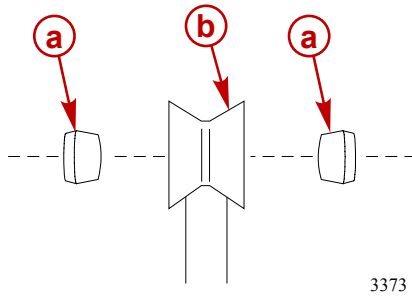


- a** - Outer locknut
- b** - Inner locknut
- c** - Actuating pin

Description	Nm	lb. in.	lb. ft.
Inner locknut "b"	27		20

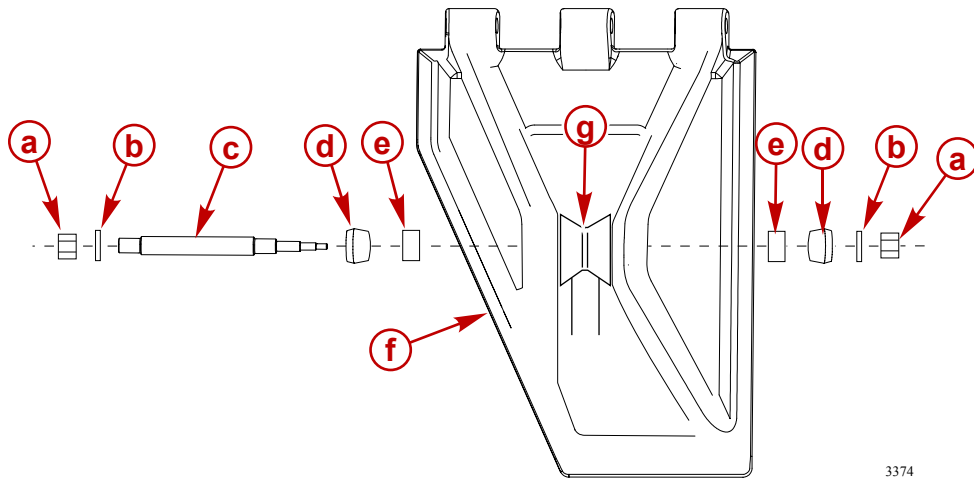
Actuating Pin Installation (845532A02 and 845630A02 Kits Only)

1. Insert two rubber bushings, tapered edge first, into the rod end of the tab cylinder.



- a** - Tapered rubber bushing
- b** - Tab cylinder rod end

2. Place the rod end between the plate ribs.
3. Insert a spacer and a rubber bushing, tapered edge first, into each rib.
4. Insert the actuating pin through both ribs and the rod end.
5. Secure both sides of the pin with washers and locknuts. Torque to the specified value.



- a** - Locknut
- b** - Washer
- c** - Actuating pin
- d** - Tapered rubber bushing
- e** - Spacer
- f** - Plate
- g** - Tab cylinder rod end

Description	Nm	lb. in.	lb. ft.
Locknut "a"	61		45

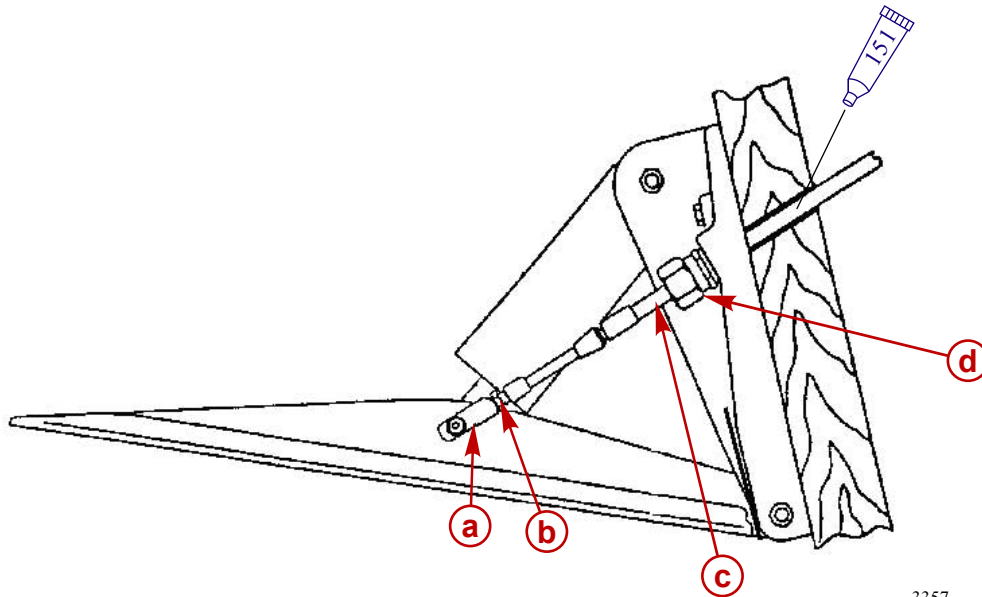
Attaching the Cable (All Models)

⚠ CAUTION

Avoid possible transom damage or sinking of the vessel. Apply a marine sealer to the transom through holes and around the actuator cable inside the transom to prevent water intrusion.

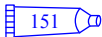
1. Thread the cable grip into the upper plate.
2. Apply a marine-grade silicone sealant to the transom through holes and around the actuator cable inside the transom.

3. Install a teleflex 3300 hp or equivalent through the transom and cable grip.
4. Thread the cable end on the cable.
5. Tighten the locknut.

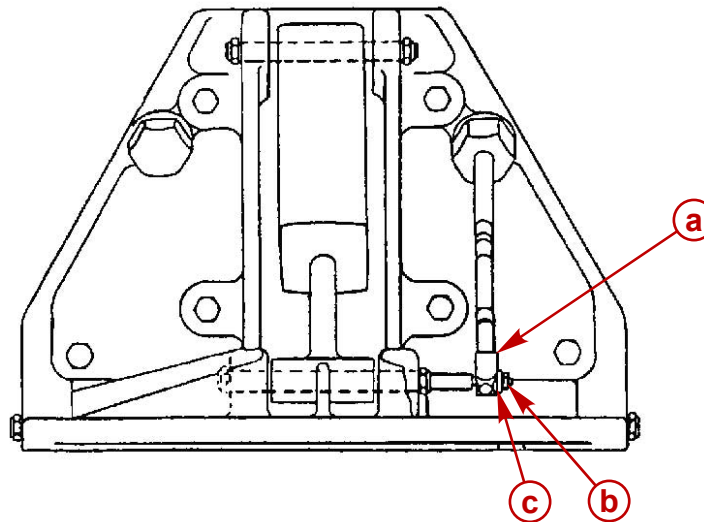


3357

- a - Cable end
- c - Cable
- b - Locknut
- d - Cable grip

Tube Ref. No.	Description	Where Used	Part Number
	Marine Sealer	Transom through holes and around the actuator cable	Obtain Locally

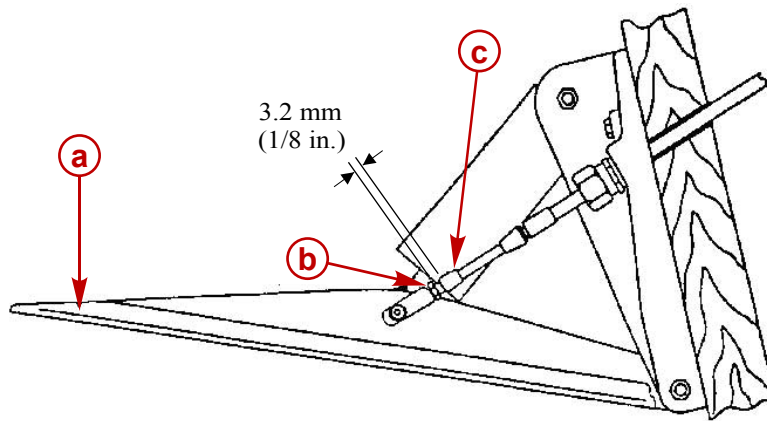
6. Attach the cable end to the actuating pin.
7. Install the flat washer and secure with a locknut.



3358

- a - Cable end
- c - Locknut
- b - Flat washer

8. With the K-Plane in the maximum up position, adjust the cable so the cable end locknut is within 3.2 mm (1/8 in.) of the lower cable seal, or until the indicator reads the desired position.



3359

- a - K-Plane
- b - Cable end locknut
- c - Lower cable seal

9. Tighten the cable grip securely.