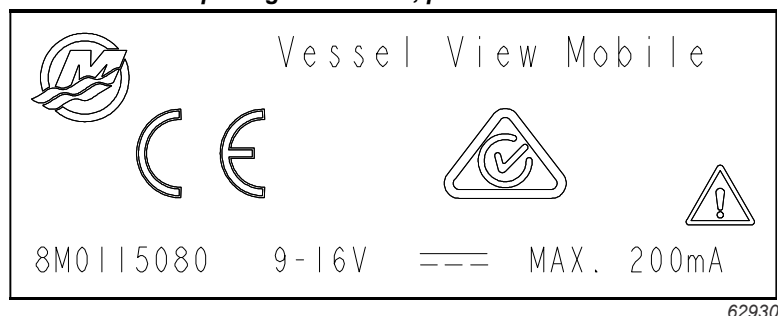


84-8M0115080

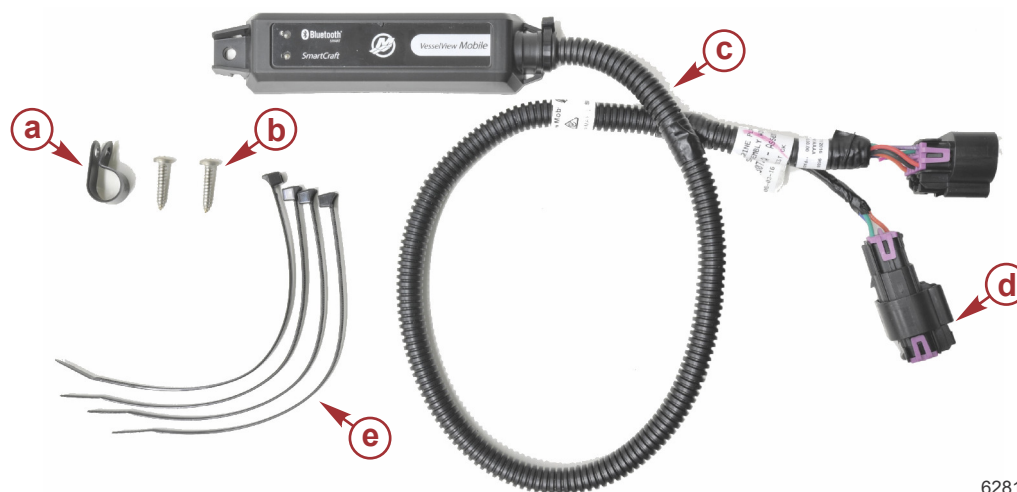
VESSELVIEW MOBILE MODULE

IMPORTANT: This document guides our dealers, boatbuilders, and company service personnel in the proper installation or service of our products. If you have not been trained in the recommended servicing or installation procedures for these or similar Mercury Marine products, have the work performed by an authorized Mercury Marine dealer technician. Improper installation or servicing of the Mercury product could result in damage to the product or personal injury to those installing or operating the product. Always refer to the appropriate Mercury Marine service manual for component removal and installation instructions.

NOTE: After completing installation, place these instructions with the product for the owner's future use.



Components Contained in Kit




Ref.	Qty.	Description	Part Number
a	1	Cable clip	23567
b	2	Screw	69013
c	1	VesselView Mobile module with harness	NSS
d	1	Weather cap	859318T2
e	4	Cable tie	816311T

Notice To Installer

IMPORTANT: The documentation must be consulted in all cases where the symbol , is marked.

Safety Requirements

IMPORTANT:  Always refer to the Operation Manual included with each engine for other important safety information. Water depth may vary in identical locations at different times of the day or year. As operator, always monitor water depth. Reduce speed and proceed with caution whenever you're driving a boat in shallow water or in areas where the waters are suspected of having underwater obstacles that could be struck by the underwater drive components, or the boat bottom. Do not use mobile devices as the sole source of navigation, or engine and vessel data.

WARNING

Rotating propellers and pinch points can cause serious injury or death. Stay clear of the sterndrive or outboard engine when the engine is running.

WARNING

This unit has not been assessed as a safety component and is not to be relied upon as a safety device.

Specifications

IMPORTANT:  Always refer to the Operation Manual included with each engine for fuse holder location, fuse rating, and electrical system overload protection.

This equipment is only intended for connection to 9–16 Vdc, low voltage, electrical systems of boats or similar marine vessels. Do not connect this equipment to any circuit rated in excess of 16 Vac rms, 22.6 Vpk or 35 Vdc, and only connect to boat electrical systems powered by batteries or alternators or otherwise only to circuits separated from main voltages by at least double or reinforced insulation.

This product must not be installed in a manner inconsistent with the recommended procedures set forth in the installation instructions included with the product. Improper installation or removal of the product can cause injury, or damage to the vessel or engine components.

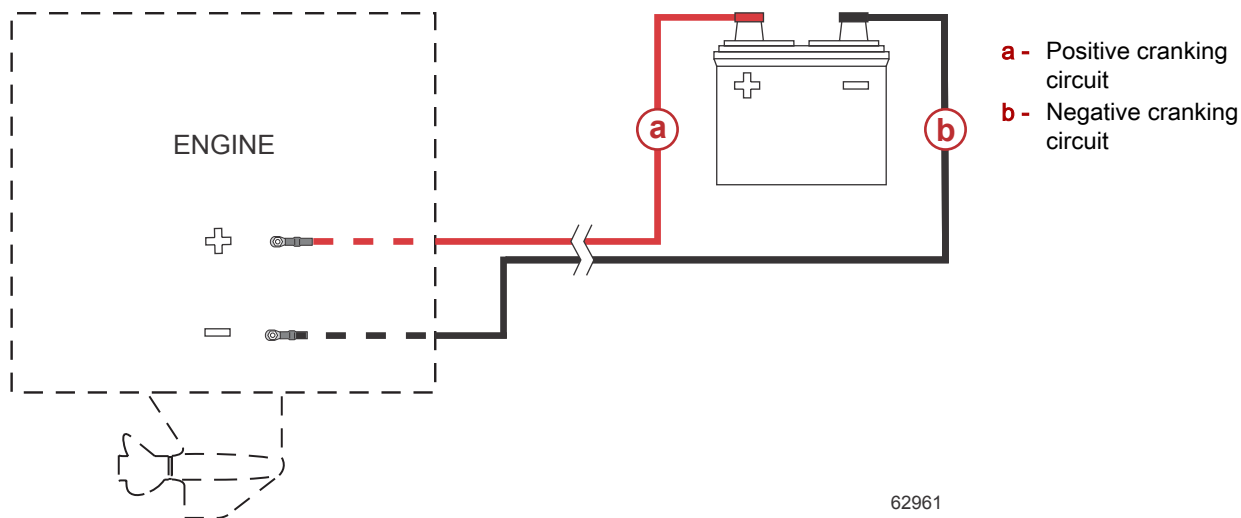
Overload and Fuse Protection

IMPORTANT:  Always refer to the Operation Manual included with each engine for fuse holder location, fuse rating, and electrical overload protection.

Electrical Specifications		
Electrical rating	9–16 V	
Maximum fuse size	Mechanical - 15 A	
	DTS - 5 A	
Maximum rate input current	200 mA	
IP rating	IP4X	
Environmental conditions	Altitude	<3000 m
	Operating temperature	-20–85 °C (-4–185 °F)
	Overvoltage	Category 1
	For use in pollution degree 4 (outdoor use)	

Battery Connections

IMPORTANT:  Always refer to the Installation Manual included with each engine for battery specifications and battery installation procedures.



Precautions for Wiring and Harnesses

IMPORTANT: Refer to the following precautions to avoid damage to the electrical system when working on or around the electrical harness or when adding other electrical accessories.

- Do not attempt diagnostics without the proper approved service tools.
- Do not puncture wires for testing (probing).
- Do not splice wires into the harness.
- Do not connect, network, tie into, switch, or sink source voltage or current from the wiring harnesses.
- Do not connect any type of communication or navigation equipment to the wire harnessing other than at the designated connection point.
- Install boat accessory equipment using an appropriate power source connection, such as a fuse panel or junction box circuit breaker.
- Do not tap directly into any of the electrical wiring harnesses for a source of power.

Guidelines for Installing Harnesses

Follow these guidelines when installing the harnesses:

- The maximum CAN bus length is 70 m (230 ft).
- The maximum length of a CAN bus drop (branch off the main harness) is 7 m (23 ft).
- The combined length of all drops cannot exceed 36 m (118 ft).
- Locate an appropriate path for routing the harness connections to their installation points.
- Inspect the routing path to ensure that the surfaces are free of any sharp edges or burrs that could cut the harness.
- Fasten and support the harness with clamps or cable ties along the routing path. A clamp or cable tie must be used within 25.4 cm (10 in.) from any connection and every 45.8 cm (18 in.) along the routing path if the harness is not housed in a rigging tube.
- Ensure that all connections are tight and locked (if equipped with a lock mechanism).
- Seal all unused connectors with weather caps.
- Route the harness at least 1 m (3 ft 3 in.) from any device that produces electromagnetic interference (EMI), such as VHF radio and radar equipment.

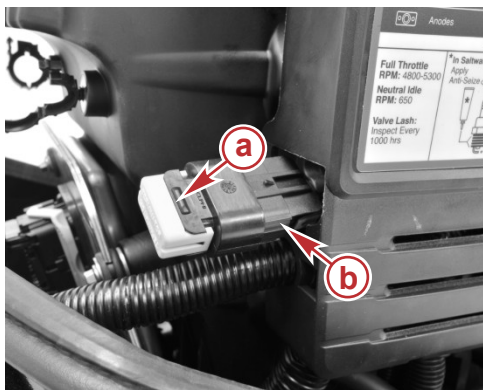
VesselView Mobile Module Connection

The VesselView Mobile module can be mounted at the helm if the vessel is equipped with a junction box and open connection point. The module can also be mounted on the engine.

Engine Mounted Module

NOTE: The location of the engine harness 10-pin connector will vary depending on the engine model.

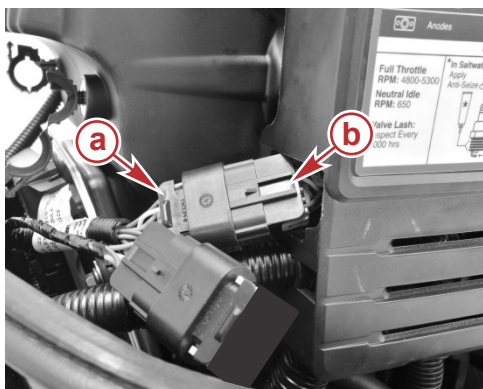
1. Locate and remove the terminator resistor or weather cap from the engine harness 10-pin connector.



62807

- a - Terminator/weather cap
- b - Engine harness 10-pin connector

2. Plug the VesselView Mobile harness 10-pin connector into the engine harness 10-pin connector.

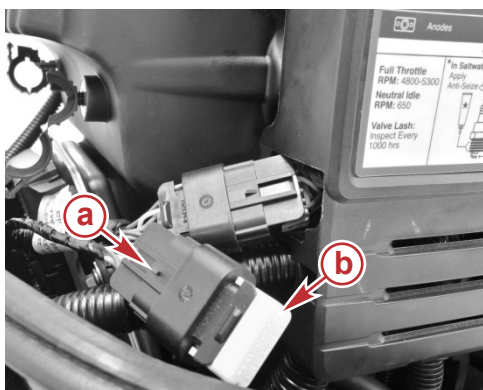


62818

- a - VesselView Mobile harness 10-pin connector
- b - Engine harness 10-pin connector

NOTE: Part number 859318T1 must be purchased separately if the engine is not equipped with a yellow terminator resistor.

3. Remove the weather cap from the VesselView Mobile harness terminator connector and install a yellow terminator into the VesselView Mobile harness terminator connector.

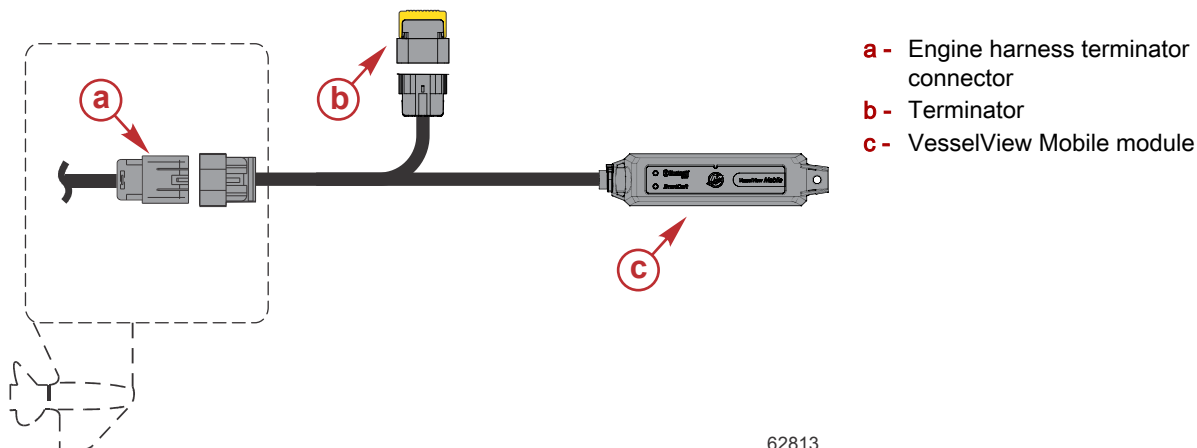


62817

- a - VesselView Mobile harness terminator connector
- b - Yellow terminator

IMPORTANT: The VesselView Mobile harness must not contact the flywheel, throttle and shift components, or other moving parts. Care must be taken to assure that the module and its wiring harness are not in close proximity to the high voltage ignition leads and do not interfere with the throttle or shift mechanisms.

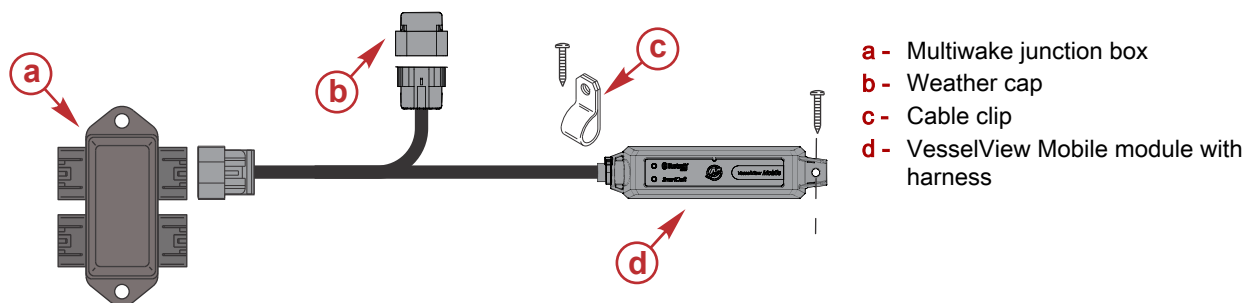
- Identify an appropriate location and routing path on the engine for the VesselView module and harness. Secure the module and harness to the engine at the selected location with cable ties.



Helm Mounted Module

IMPORTANT: Multiple engine applications may be equipped with more than one junction box. Always connect the VesselView Mobile module to the multiwake junction box on vessels equipped with multiple engines. The multiwake junction box has unswitched 12 V power from the starboard battery.

- Locate the multiwake junction box.



- Select a suitable location for mounting the VesselView Mobile module and harness.
- Use a 3/32 drill bit (0.093 in.) to drill two pilot holes to mount the VesselView Mobile module and the harness cable clip.
- Install the VesselView Mobile harness 10-pin connector into the multiwake junction box.

IMPORTANT: The harness cable clip should be positioned on the harness and slid up close to the module. It may then be secured to the surface with a screw. The cable tie straps should be used to secure the main harness and terminator extension.

- Mount the VesselView Mobile module with the supplied mounting screws, cable clip, and cable ties.

LEDs



62809

a - Bluetooth® LED

b - SmartCraft LED

Operation of the VesselView Mobile module can be checked by observing the SmartCraft light and Bluetooth light. Refer to the following tables:

Bluetooth LED

Keyswitch	Bluetooth LED	Function
ON—key up	blink	At initial power up from a completely OFF state, the LED will blink three times. The operator can confirm LED operation by looking for the blinking LED at key ON. A completely OFF state occurs once power has been removed for more than 10 minutes.
ON	blink	The module is in a Bluetooth advertising mode. The module is waiting for a device (phone) to attempt a connection.
ON	ON	A device (phone) has connected over Bluetooth to the module. Regardless of engine data available or not, the device is connected to the module. No other devices will be able to connect to the module. The module will not appear in the list of available devices (scan for devices) because the module is no longer advertising. If a connected device disconnects, closes the app for example, the module will reenter the advertising mode and begin blinking again.
OFF—short term	ON or blink	The module stays awake for approximately 10 minutes following key OFF. This accommodates a short duration engine shut down without requiring the user to reconnect. During this 10 minute window, the last connected device can connect again. The module will advertise (blink) but a new device cannot connect because a first time connection requires the presence of an engine. With the key OFF, the engine is mainly OFF and only allows limited functionality, such as drive trim. The engine data items will display as "-" or a default value such as zero.
OFF—long term	OFF	Approximately 10 minutes after a key OFF, the module will power itself OFF completely.

SmartCraft LED

Keyswitch	SmartCraft LED	Function
ON—key up	blink	At initial power up from a completely OFF state, the LED will blink three times. The operator can confirm LED operation by looking for the blinking LED at key ON. A completely OFF state occurs once power has been removed for more than 10 minutes.
ON	ON	The SmartCraft LED will be ON if a connection has been made to an engine.
ON	OFF	No engine available or unable to connect to an engine.
OFF	OFF	With the keyswitch OFF, the engine will be disconnected from the module.

NOTE: Visit VesselViewMobile.com for the latest information on countries with Bluetooth use approvals for this VesselView Mobile device, connectivity, troubleshooting, application updates, and maintenance monitoring of your Mercury Marine product.

Notes:

Products of Mercury Marine
W6250 Pioneer Road
Fond du Lac, WI 54936-1939

© MERCURY MARINE. All rights reserved. Reproduction in whole or in part without permission is prohibited. Alpha, Axis, Bravo One, Bravo Two, Bravo Three, Circle M with Waves Logo, K-planes, Mariner, MerCathode, MerCruiser, Mercury, Mercury with Waves Logo, Mercury Marine, Mercury Precision Parts, Mercury Propellers, Mercury Racing, MotorGuide, OptiMax, Quicksilver, SeaCore, Skyhook, SmartCraft, Sport-Jet, Verado, VesselView, Zero Effort, Zeus, #1 On the Water and We're Driven to Win are registered trademarks of Brunswick Corporation. Pro XS is a trademark of Brunswick Corporation. Mercury Product Protection is a registered service mark of Brunswick Corporation.