

FLUSH MOUNT TRIM SWITCH ASSEMBLY

IMPORTANT: This document guides our dealers, boatbuilders, and company service personnel in the proper installation or service of our products. If you have not been trained in the recommended servicing or installation procedures for these or similar Mercury Marine products, have the work performed by an authorized Mercury Marine dealer technician. Improper installation or servicing of the Mercury product could result in damage to the product or personal injury to those installing or operating the product.

NOTE: After completing installation, place these instructions with the product for the owner's future use.

Flush Mount Trim Switch Assembly Installation

WARNING

Performing service or maintenance without first disconnecting the battery can cause product damage, personal injury, or death due to fire, explosion, electrical shock, or unexpected engine starting. Always disconnect the battery cables from the battery before maintaining, servicing, installing, or removing engine or drive components.

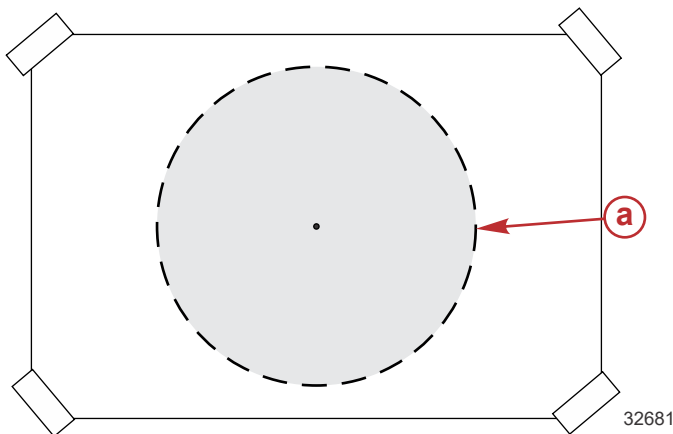
NOTE: For the triple and quad-engine flush mount trim switch, there are two optional cut out templates to use for modifying the dashboard. Choose the template that best suits the installation.

1. Disconnect the battery cables from the battery.
2. Cut out the appropriate template and select a location that provides adequate accessibility.
3. Verify the area behind the selected location is clear of obstructions and wires.

CAUTION

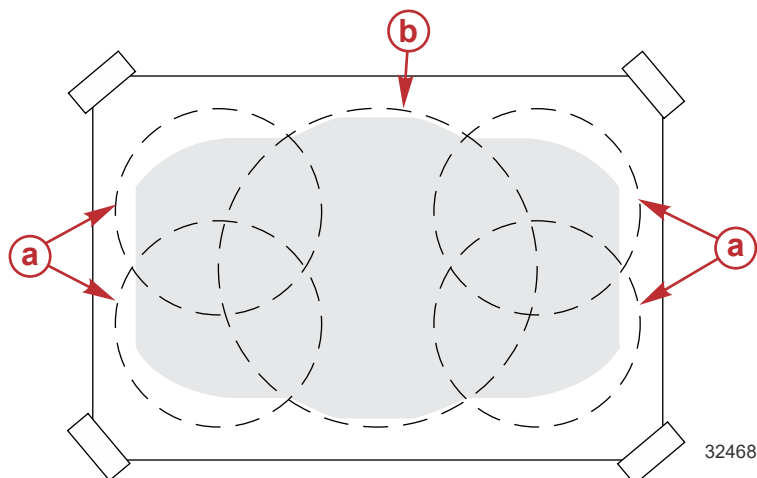
Avoid injury or product damage. Obstructions, such as braces and wiring, may be unseen when looking at the front of the dashboard. Before drilling or cutting any holes in the dashboard, check the area behind the dashboard for obstructions. Do not drill or cut when obstructions are present.

4. Apply masking tape to the area that will be removed to prevent chipping and cracking. Tape the template to the dashboard.
5. For a single or dual-engine trim switch assembly installation, drill a 54 mm (2.125 in.) hole.



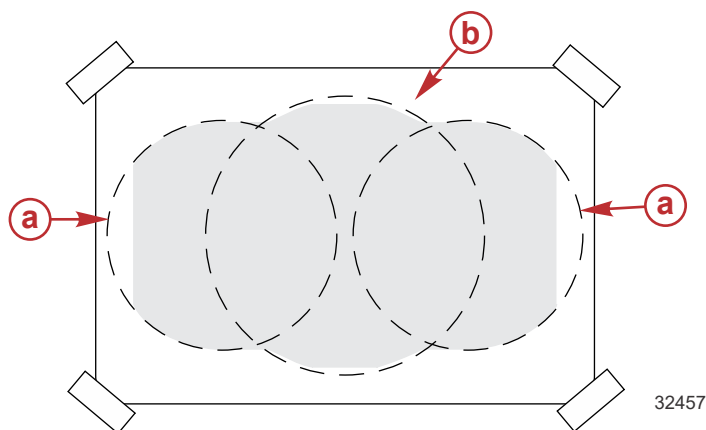
Single and dual trim
a - 54 mm (2.125 in.)

6. For a triple and quad trim switch assembly installation, drill the smaller diameter holes first, and then the larger diameter hole.



Triple and quad - Option 1

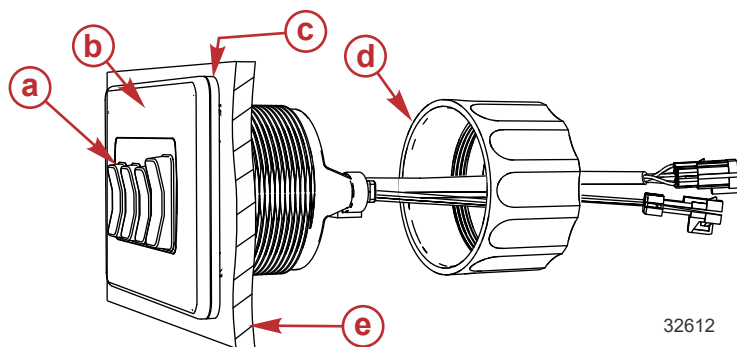
- a** - 35 mm (1.375 in.) hole saw
- b** - 54 mm (2.125 in.) hole saw



Triple and quad - Option 2

- a** - 45 mm (1.75 in.) hole saw
- b** - 54 mm (2.125 in.) hole saw

7. Install the gasket onto the switch assembly.
8. Install the switch assembly onto the dashboard and secure with the mounting nut. Tighten the mounting nut securely.



- a** - Trim switch assembly
- b** - Bezel
- c** - Gasket
- d** - Mounting nut
- e** - Dashboard

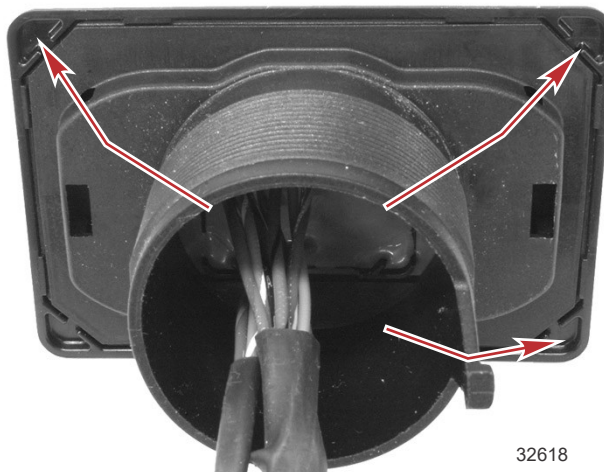
Trim Switch Architecture

For information on how to connect the trim switch, please refer to the appropriate system installation manual.

Bezel Removal and Replacement

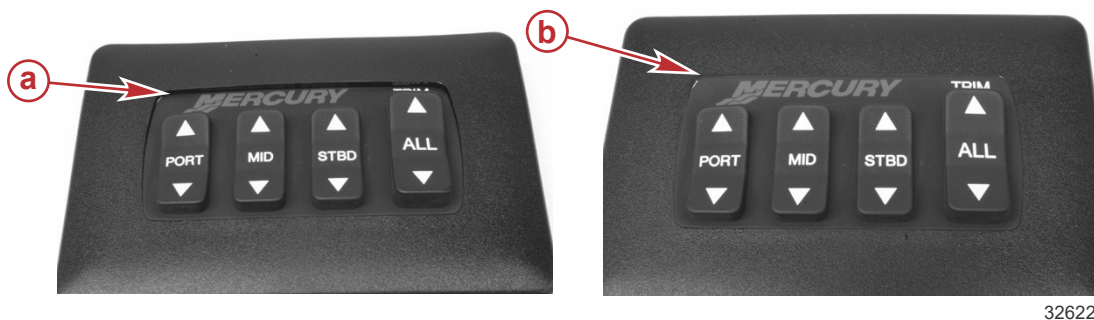
Bezel Removal

On the back side of the trim switch assembly, carefully push on three corners of the bezel to remove the bezel.



Bezel Replacement

1. Verify the trim switch is properly located in the switch housing.
2. Align the bezel with the trim switch and housing.
3. Starting at one corner, press the bezel onto the switch housing at each corner. The bezel will snap into place.
4. Verify the trim switch gasket is not under the bezel. Use a finger to move the rubber out from under the bezel.

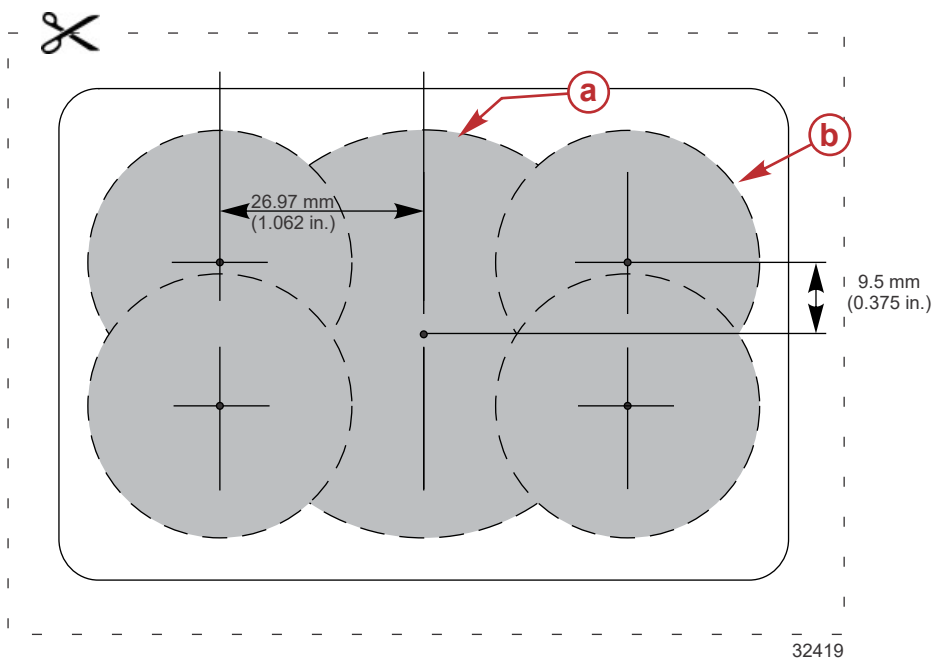


- a** - Trim switch rubber under bezel
- b** - Correct installation

Flush Mount Trim Switch Assembly Templates

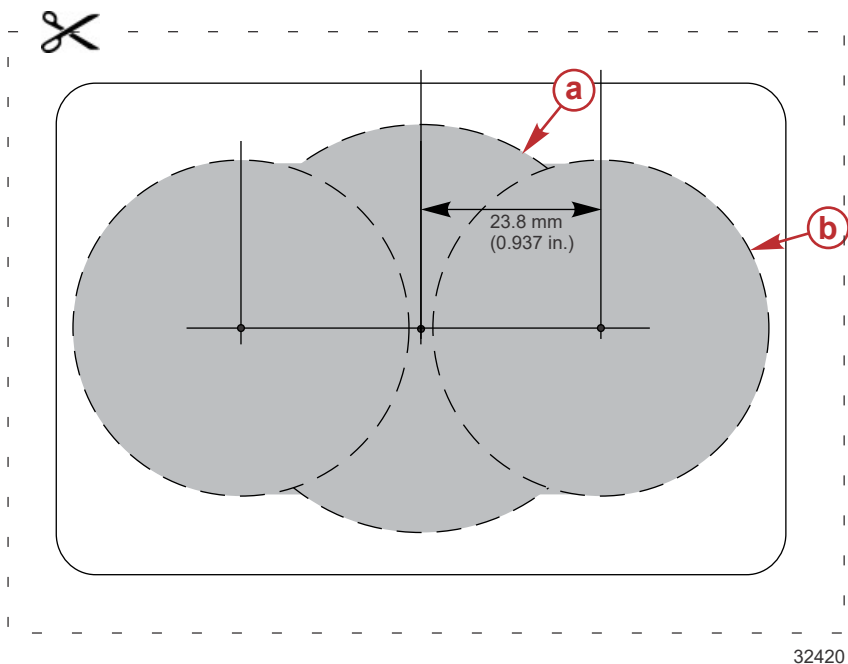
IMPORTANT: Due to printing variables, image size may have changed from actual size. Check graphic for accuracy prior to using template.

Notes:



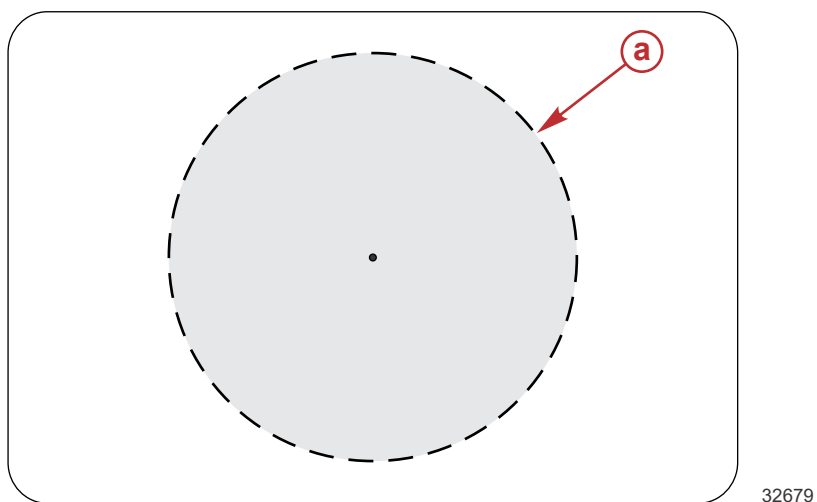
Triple and quad - Option 1

- a** - 54 mm (2.125 in.) hole saw
- b** - 35 mm (1.375 in.) hole saw



Triple and quad - Option 2

- a** - 54 mm (2.125 in.) hole saw
- b** - 45 mm (1.75 in.) hole saw



Single and dual trim

- a** - 54 mm (2.125 in.)

Products of Mercury Marine
W6250 Pioneer Road
Fond du Lac, WI 54936-1939

© MERCURY MARINE. All rights reserved. Reproduction in whole or in part without permission is prohibited. Alpha, Axius, Bravo One, Bravo Two, Bravo Three, Bravo Four S™, Circle M with Waves Logo, GO BOLDLY, K-planes, Mariner, MerCathode, MerCruiser, Mercury, Mercury with Waves Logo, Mercury Marine, Mercury Precision Parts, Mercury Propellers, Mercury Racing, MotorGuide, OptiMax, Pro XS, Quicksilver, SeaCore, Skyhook, SmartCraft, Sport-Jet, Verado, VesselView, Zero Effort, Zeus, #1 On the Water and We're Driven to Win are registered trademarks of Brunswick Corporation. Mercury Product Protection is a registered service mark of Brunswick Corporation. All other marks are the property of their respective owners.