

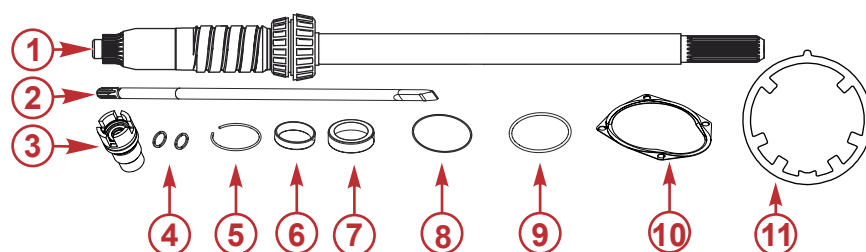
DRIVESHAFT CONVERSION KIT

IMPORTANT: This document guides our dealers, boatbuilders, and company service personnel in the proper installation or service of our products. If you have not been trained in the recommended servicing or installation procedures for these or similar Mercury Marine products, have the work performed by an authorized Mercury Marine dealer technician. Improper installation or servicing of the Mercury product could result in damage to the product or personal injury to those installing or operating the product. Always refer to the appropriate Mercury Marine service manual for component removal and installation instructions.

NOTE: After completing installation, place these instructions with the product for the owner's future use.

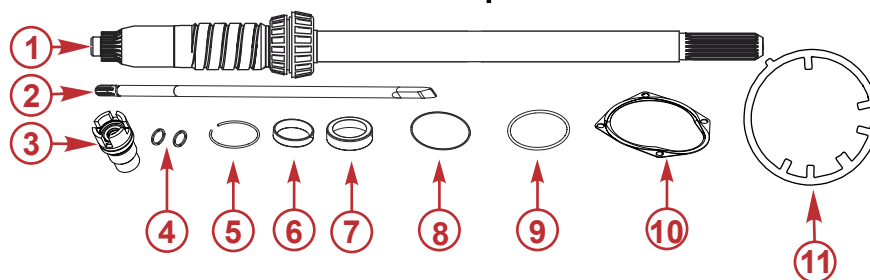
Models Covered
V6 (175–225), V8 (200–300) 4.8 in., 5.4 in., and Sport Master

Components Contained in 4.8 in. Driveshaft Conversion Kit



Ref No.	Qty.	Description	Part Number
1	1	4.8 in. driveshaft with bearings L model 50.8 cm (20 in.)	NSS
1	1	4.8 in. driveshaft with bearings XL model 63.5 cm (25 in.)	NSS
1	1	4.8 in. driveshaft with bearings XXL model 76.2 cm (30 in.)	NSS
2	1	Shift shaft L model	8M0164968
2	1	Shift shaft XL model	8M0164969
2	1	Shift shaft XXL model	8M0164970
3	1	Lower shift shaft bushing	8M0164967
4	2	Sealing washer	830749
5	1	Retaining ring	8M0142866
6	1	Upper tapered roller cup	NSS
7	1	Lower tapered roller cup	NSS
8	1	Upper shim set	8M0063267
9	1	Lower shim set	8M0063268
10	1	Water pump gasket	8172771
11	1	Bearing carrier tab washer	8M0142855

Components Contained in 5.4 in. and Sport Master Driveshaft Conversion Kit



70819

Ref No.	Qty.	Description	Part Number
1	1	5.4 in. driveshaft with bearings L model 50.8 cm (20 in.)	NSS
1	1	5.4 in. driveshaft with bearings XL model 63.5 cm (25 in.)	NSS
1	1	5.4 in. driveshaft with bearings XXL model 76.2 cm (30 in.)	NSS
2	1	Shift shaft L model	8M0164968
2	1	Shift shaft XL model	8M0164969
2	1	Shift shaft XXL model	8M0164970
3	1	Lower shift shaft bushing	8M0164967
4	2	Sealing washer	830749
5	1	Retaining ring	8M0142866
6	1	Upper tapered roller cup	NSS
7	1	Lower tapered roller cup	NSS
8	1	Upper shim set	8M0063267
9	1	Lower shim set	8M0063268
10	1	Water pump gasket	8172771
11	1	Bearing carrier tab washer	8M0108527

Driveshaft Conversion Kit Installation

IMPORTANT: Refer to the appropriate service manual for complete disassembly and assembly procedures.

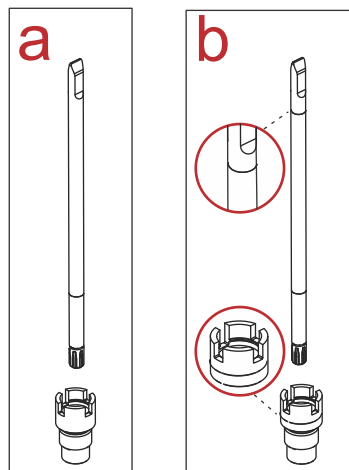
IMPORTANT: Changing the driveshaft requires the pinion height and gear backlash to be checked for factory tolerance.

Failure to verify the pinion height and backlash can result in a catastrophic failure. The gear housing must also be checked for air leaks after the installation of the driveshaft and shift shaft.

1. Disconnect the battery cables from the battery.
2. Drain the lubricant from the gear housing.
3. Refer to the appropriate service manual for complete disassembly, driveshaft replacement, and assembly procedures.

New Shift Shaft and Bushing Information

IMPORTANT: The supplied Design II shift shaft and shift shaft bushing must be used as a set. Do not intermix Design I components with Design II components.



70855

- a - Design I shift shaft and bushing
b - Design II shift shaft and bushing

Products of Mercury Marine
W6250 Pioneer Road
Fond du Lac, WI 54936-1939

© MERCURY MARINE. All rights reserved. Reproduction in whole or in part without permission is prohibited. Alpha, Axius, Bravo One, Bravo Two, Bravo Three, Circle M with Waves Logo, GO BOLDLY, K-planes, Mariner, MerCathode, MerCruiser, Mercury, Mercury with Waves Logo, Mercury Marine, Mercury Precision Parts, Mercury Propellers, Mercury Racing, MotorGuide, OptiMax, Pro XS, Quicksilver, SeaCore, Skyhook, SmartCraft, Sport-Jet, Verado, VesselView, Zero Effort, Zeus, #1 On the Water and We're Driven to Win are registered trademarks of Brunswick Corporation. Mercury Product Protection is a registered service mark of Brunswick Corporation. All other marks are the property of their respective owners.