

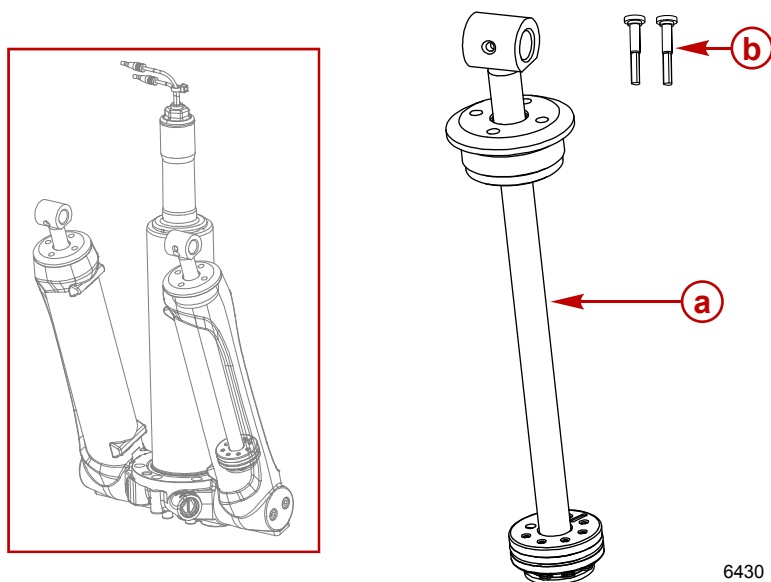
TRIM ROD ASSEMBLY KIT

L6 VERADO

IMPORTANT: This document is written to aid our dealers and company service personnel in the proper installation or service of our products. Persons who are not familiar with these or similar products produced by Mercury Marine, and who have not been trained in the recommended servicing or installation procedures should have the work performed by an authorized Mercury Marine dealer. Improper installation or servicing of the Mercury product could result in damage to the product or personal injury to the installer or persons operating the product. Always refer to the appropriate Mercury Marine service manual for component removal and installation instructions.

NOTE: After completing installation, these instructions should be placed with the product for the owner's future use.

Components Contained in Kit



Ref.	Qty.	Description	Part Number
a	1	Shock rod assembly	NSS
b	2	Trilobe pin	821539

Trim Cylinder Rod Kit Installation

Power Trim System Removed from Outboard

Installation

1. If the power trim system was removed from the outboard, refer to **Power Trim - Trim Cylinder and Pivot Pin** in the appropriate service manual for removal and installation instructions.
2. After installing the components, fill and bleed the power trim system. Refer to **Check Fluid and Purge the Power Trim System** in the appropriate service manual.

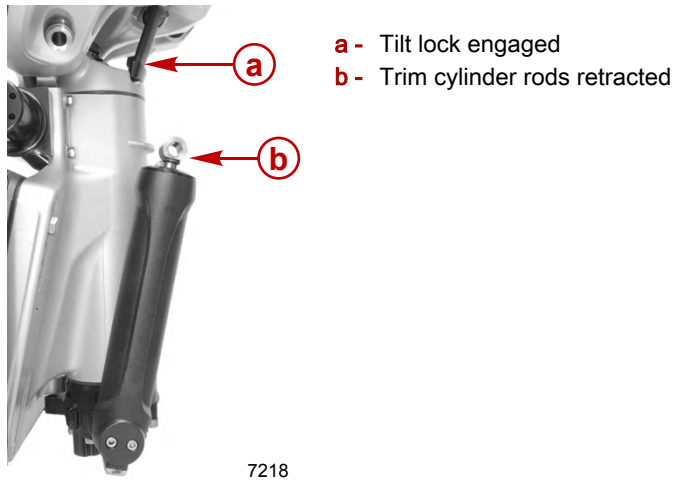
Power Trim System Installed on Outboard

Removal

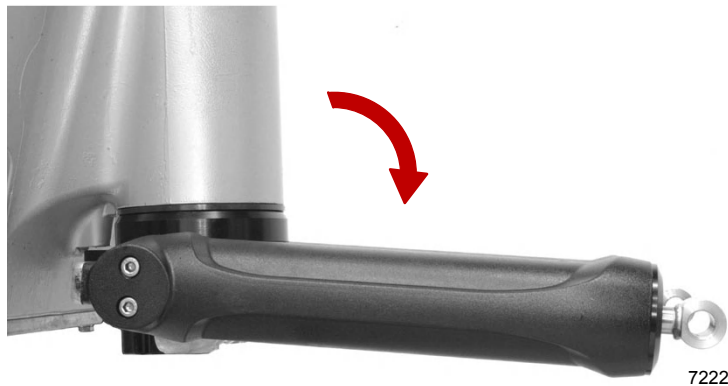
NOTE: If the power trim system is installed on the outboard, the trim cylinder rod assembly may be removed without removing the complete power trim system from the outboard.

1. Engage the tilt lock. Refer to **Power Trim - Power Trim System** in the appropriate service manual.
2. Remove the trim cylinder rod ends from the mount cradle. Refer to **Power Trim - Power Trim System** in the appropriate service manual.

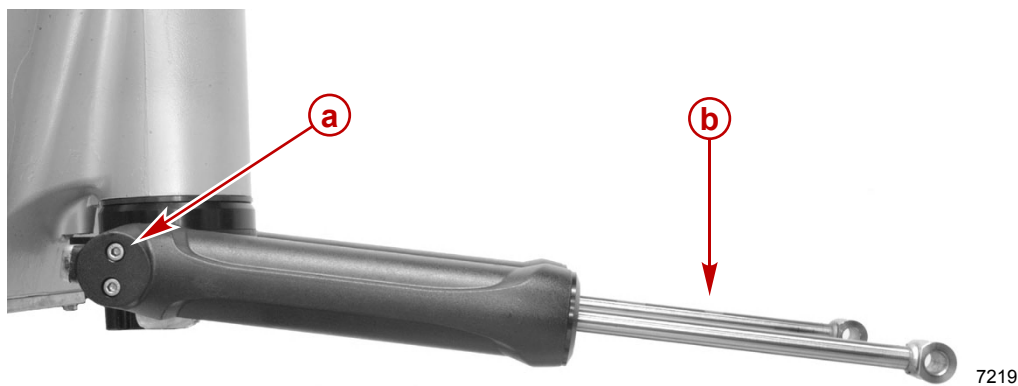
3. Retract the trim cylinder rods.



4. Rotate the trim cylinder downward, slightly past horizontal.



5. Extend the trim cylinder rods.
6. Momentarily actuate the trim switch to retract the cylinder rod end to relieve system pressure.



- a - Internal hex mounting screws (6 mm)
b - Trim cylinder rods extended

7. Place a drip pan under the trim cylinder before removing the end cap. Fluid loss will occur when the end cap is removed.
8. Remove the trim cylinder end cap. Remove the cylinder rod assembly. Refer to **Trim Cylinder Disassembly** in the appropriate service manual.

Installation


1. Lubricate the O-ring with clean power steering fluid on the end cap assembly. Install the new trim rod assembly.
2. Tighten the end cap to the specified torque. Refer to **Trim Cylinder Reassembly** in the appropriate service manual for component installation.

Description	Nm	lb-in.	lb-ft
End cap	61	–	45

3. If the cylinder was removed for disassembly, install the trim cylinder to the pivot pin. Tighten the trim cylinder mounting screws to the specified torque.

Description	Nm	lb-in.	lb-ft
Trim cylinder mounting screws	26	–	19.2

4. Retract the trim cylinder rods.
5. Rotate the trim cylinders to align with the mount cradle. Extend the trim cylinder rods.
6. Install the trim cylinder rod ends to the mount cradle. Refer to the appropriate service manual section for installation.
7. After installing the components, fill and bleed the power trim system with Power Trim and Steering Fluid. Refer to **Check Fluid and Purge the Power Trim System** in the appropriate service manual.

Tube Ref No.	Description	Where Used	Part No.
 114	Power Trim and Steering Fluid	Power trim system	92-858074K01

Products of Mercury Marine
W6250 Pioneer Road
Fond du Lac, WI 54936-1939

© MERCURY MARINE. All rights reserved. Reproduction in whole or in part without permission is prohibited. Alpha, Axis, Bravo One, Bravo Two, Bravo Three, Circle M with Waves Logo, K-planes, Mariner, MerCathode, MerCruiser, Mercury, Mercury with Waves Logo, Mercury Marine, Mercury Precision Parts, Mercury Propellers, Mercury Racing, MotorGuide, OptiMax, Quicksilver, SeaCore, Skyhook, SmartCraft, Sport-Jet, Verado, VesselView, Zero Effort, Zeus, #1 On the Water and We're Driven to Win are registered trademarks of Brunswick Corporation. Pro XS is a trademark of Brunswick Corporation. Mercury Product Protection is a registered service mark of Brunswick Corporation.